

DAILY GENERATION AVAILABILITY REPORT

LUMA is not responsible for generation and is providing this report as part of service to our customers.

The report shows the availability generation as reported daily by each generator.

4/5/2025

Projected System Availability and Reserves

2,225

PEAK DEMAND

650

REQUIRED RESERVES

254

RESERVES SHORTFALL

2,621

AVAILABLE SUPPLY

396

AVAILABLE RESERVES

42%

AVAILABILITY RATE

*All units are shown in MW

Previous Day 4/4/2025

Min. Demand

1,519 MW

Time:

10:26 AM

Peak Demand

2,350 MW

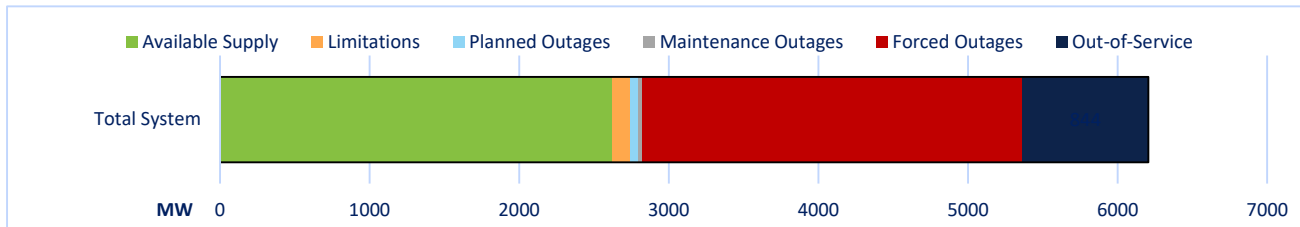
Time:

7:34 PM

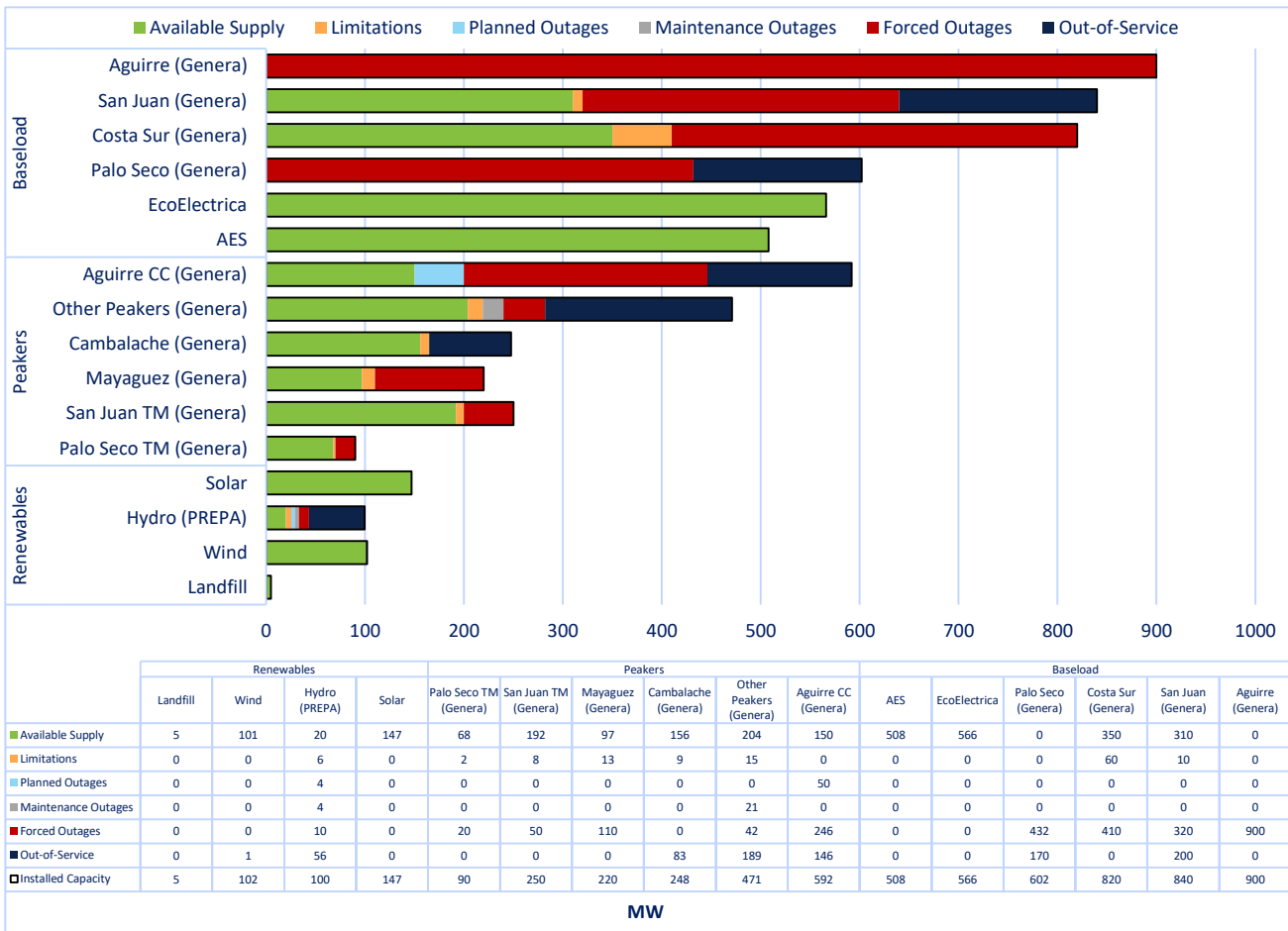
Total Generation

36,032 MWh

System Availability and Status



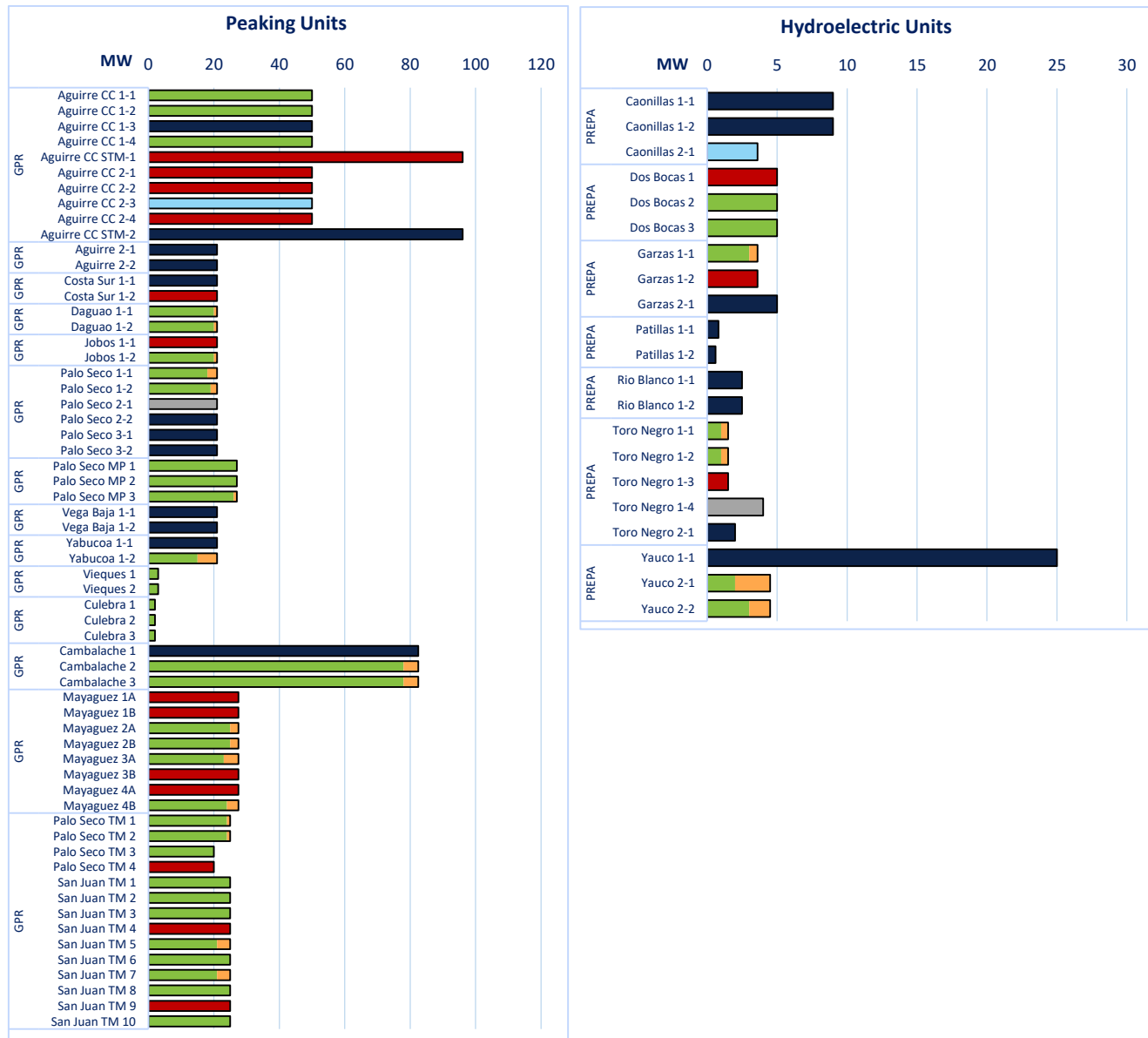
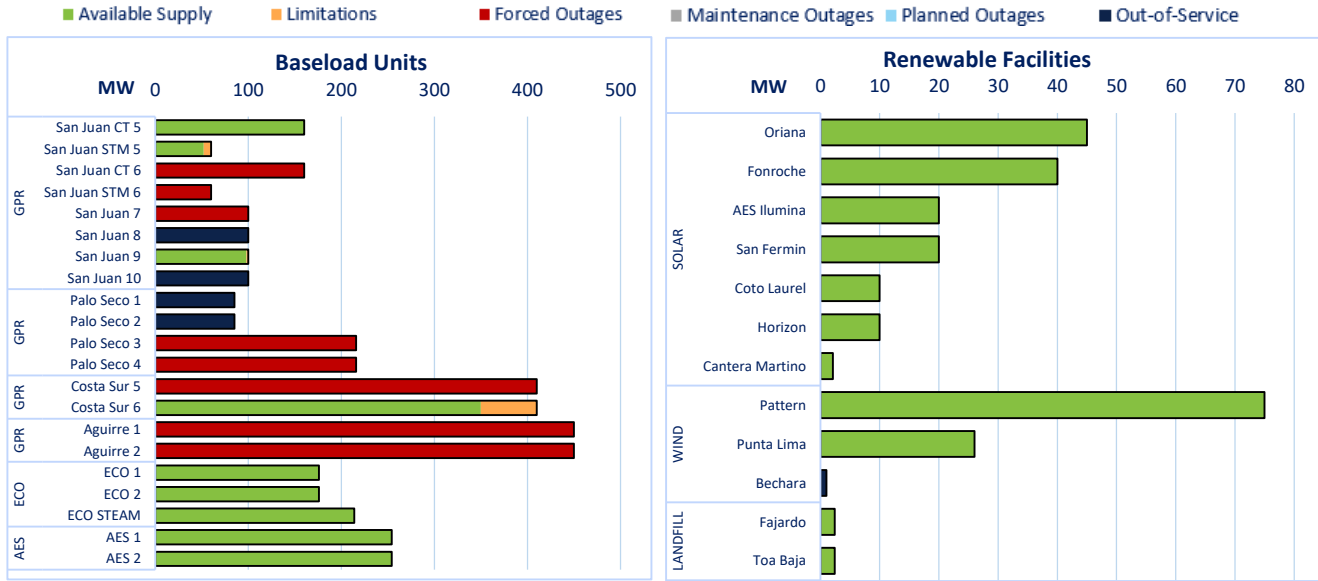
Availability and Status as reported by each Generator



DAILY GENERATION AVAILABILITY REPORT

LUMA is not responsible for generation and is providing this report as part of service to our customers.

The report shows the availability generation as reported daily by each generator.



DAILY GENERATION AVAILABILITY REPORT

LUMA is not responsible for generation and is providing this report as part of service to our customers.

The report shows the availability generation as reported daily by each generator.

PLANNED AND MAINTENANCE OUTAGES

		Baseload Units																												
		Scheduled Outage														Outage Extension														
Month		J	F	M	A	M	J	J	A	S	O	N	D																	
GPR	San Juan CT 5																													
	San Juan STM 5																													
	San Juan CT 6																													
	San Juan STM 6																													
	San Juan 7																													
	San Juan 8																													
	San Juan 9																													
	San Juan 10																													
	GPR	Palo Seco 1																												
		Palo Seco 2																												
Palo Seco 3																														
Palo Seco 4																														
GPR	Costa Sur 5																													
	Costa Sur 6																													
GPR	Aguirre 1																													
	Aguirre 2																													
ECO	ECO 1																													
	ECO 2																													
	ECO STEAM																													
AES	AES 1																													
	AES 2																													

		Peaking Units																											
		Scheduled Outage														Outage Extension													
Month		J	F	M	A	M	J	J	A	S	O	N	D																
GPR	Aguirre CC 1-1																												
	Aguirre CC 1-2																												
	Aguirre CC 1-3																												
	Aguirre CC 1-4																												
	Aguirre CC STM-1																												
	Aguirre CC 2-1																												
	Aguirre CC 2-2																												
	Aguirre CC 2-3																												
	Aguirre CC 2-4																												
	Aguirre CC STM-2																												
GPR	Cambalache 1																												
	Cambalache 2																												
	Cambalache 3																												
GPR	Mayaguez 1A																												
	Mayaguez 1B																												
	Mayaguez 2A																												
	Mayaguez 2B																												
	Mayaguez 3A																												
	Mayaguez 3B																												
	Mayaguez 4A																												
	Mayaguez 4B																												

REFERENCED TERMS:

Peak Demand is the anticipated highest demand at a certain point of the day.

The Required Reserves are determined daily depending on the largest unit in the system.

Available Reserves represent the difference between the total electricity available from the generators and the current electricity demand from customers. Reserve levels can change throughout the day as the available electricity from the generators increases or decreases, or depending on the amount of electricity customers are using. Green indicates the Required Reserves will be met; red indicates the reserves will be below the Required Reserve level.

Reserves Shortfall are the difference between the Required Reserves and the Current Reserves.

Available Supply means the available electricity that will be generated by the generators. The Available Supply shown in the System Availability Graphs do not include Solar, Wind, or Landfill.

Availability Rate is calculated as Available Capacity / Nameplate Capacity, where Nameplate Capacity is the maximum output of a generator as designed by the manufacturer.

Limitations represent the reduction of electricity that can be generated by the generators. These Limitations are established by each generator.

Outages represent the reduction of electricity that can be generated by the generators due to the unavailability of a unit, or various units. These outages can be scheduled or unscheduled.

Out-of-Service represents units that have been unavailable for a period of 12 months or longer.