

Department:  
**Transmission  
Engineering**

Version:  
**02**

Effective Date:  
**07/28/25**

For other, specify here

**Shared document with: Transmission**

*\* Select the Departments impacted by the document (If apply)*

For other, specify here

**Author**

Oscar Almanza  
Technical Specialist 2

Signature and Date:

*Oscar Almanza* 07/28/25

**Reviewer 1**

Alexander D'Santos  
Principal Advisor

Signature and Date:

*Alexander D'Santos* 07/28/25

**Reviewer 2**

Oscar E Venegas, P.E. (Lic. # 23125)  
Supervisor, Line Engineering Standards

Signature and Date:

*Oscar E Venegas* 07/28/25

**Approver**

Reinaldo Baretty, P.E. (Lic. # 16712)  
Director, Systems Standards & Records

Signature and Date:

*Reinaldo Baretty* 07/28/25

**Management Approval (If apply)**

**Approver**

Signature and Date:

**Related/Referenced Documents**

Include the applicable document, section, or reference "[add link here](#)".

**Version History**

Version	Date	Revision
01	05/06/2024	First Issue
02	07/28/25	Warehouse number was corrected for each by-pass switch on Section 3.

## Table of Contents

<b>1. General .....</b>	<b>3</b>
<b>1.1. Purpose .....</b>	<b>3</b>
<b>1.2. Overview .....</b>	<b>3</b>
<b>1.3. Applicable Guidelines, Codes and Standards.....</b>	<b>3</b>
<b>2. Materials.....</b>	<b>4</b>
<b>2.1. Specific Requirements.....</b>	<b>4</b>
<b>2.2. Basic Use.....</b>	<b>6</b>
<b>2.3. Description.....</b>	<b>7</b>
<b>3. Asset Identification .....</b>	<b>7</b>
<b>4. Acceptance Criteria (example).....</b>	<b>7</b>
<b>5. Reference Documents.....</b>	<b>9</b>
<b>6. Inspection.....</b>	<b>9</b>
<b>7. Drawings.....</b>	<b>9</b>

## **1. General**

This specification covers the electrical requirements for a non-loadbreak manually hootstick operated single-phase (1Ø) Bypass Disconnect Switch for overhead lines on electrical system up to 46kV.

### **1.1. Purpose**

The purpose of this document is to outline the minimum electrical, mechanical, material furnished and fabrication requirements for the purchase of the single-phase (1Ø) 38kV Bypass Disconnect Switch.

### **1.2. Overview**

The requirements covered by this specification pertain to a 38 KV 1-phase bypass switch. The bypass switch is designed to safely bypass and isolate the recloser and regulators system equipment from the electrical system, enabling continuous service to LUMA customers during repairs or maintenance routines on reclosers and regulators without causing a disruption. The bypass switch will be manually operated using a hook stick.

### **1.3. Applicable Guidelines, Codes and Standards**

The Bypass Switch material, fabrication and operation shall comply with latest revisions of applicable industry standards, including the following:

ANSI/IEEE C37.30, C37.32, C37.34, & C37.37

IEEE C37.60/ IEC 62271-111

IEC 62271-1

IEC 62271-200

ASTM A153

ISO 9001, 14001, 45001 and 50001 certified

## **2. Materials**

All materials shall be packaged in one complete unit and marked in such a way as to facilitate handling and protection during its transportation and from damage that the receiving warehouse can readily identify to a field location without opening crates or boxes to sort items and/or parts. All materials fabrication shall comply but not limited to the standards listed on section 1.3.

### **2.1. Specific Requirements**

2.1.1 Samples shall be furnished as requested by LUMA Energy. Vendors that have supplied this material to LUMA on previous orders will not have to furnish samples at bid opening. The material will be received at the LUMA's general warehouse (011) at Palo Seco, Puerto Rico. Shipping will include transportation and unloading at the indicated warehouse.

2.1.2 The connection terminals shall have a 4-hole nema pad connector which can accommodate copper or aluminum conductors, ranging 556.5 or 1192.5 kcmil ACSR with 4 holes terminal pad mounting hardware.

- a. The connector material shall be compatible with either copper or aluminum conductors.
- b. The connectors are to be coated with an approved oxide inhibiting compound.
- c. The connector bolt is to be suitably staked to the switch insulator assembly and shall be carriage type.
- d. Must include nut, flat washer, and lock washers as minimum. All of them on stainless steel 304 or 316.

2.1.3 The switch shall have the following features and characteristics:

- a. Copper current carrying parts shall be silver plated at hinge, contact, and blades.
- b. Shall have polymer station post insulators.
- c. Load-buster hooks which will not deform from load-buster tool operation.
- d. The combined mechanical and electrical (M&E) tension strength shall be 15,000 lbs. (6,803.88 kg).
- e. Blade Stop: 180 degrees.

2.1.4 Electrical Requirements:

Ratings	Type I	Type II
Maximum Design Voltage (kV)	46	46
Nominal operating Voltage (kV)	38	38
Impulse Level (BIL) Voltage, kV – Phase-to-Phase and Phase-to-Ground	200	200
Impulse Level (BIL) Voltage, kV – Across the By-pass	170	170
Continuous Load Current	900	1200
Momentary current (Amps)	40,000	40,000
Minimum Leakage Distance (in)	43	43

2.1.5 Shall have a stainless-steel and corrosion resistant name plate fastened to the device showing all electrical characteristics and engraved on plate.

2.1.6 The switch shall have a positive blade lock to prevent opening under high momentary current.

2.1.7 Pole / Cross-Arm mounting bracket shall be provisioned with grounding connector.

2.1.8 Hardware shall be hot dip galvanized steel as per ANSI / ASTM A153.

2.1.9 All non-current carrying parts shall be 304 or 316 series stainless-steel.

#### **2.1.10 Environmental Requirements:**

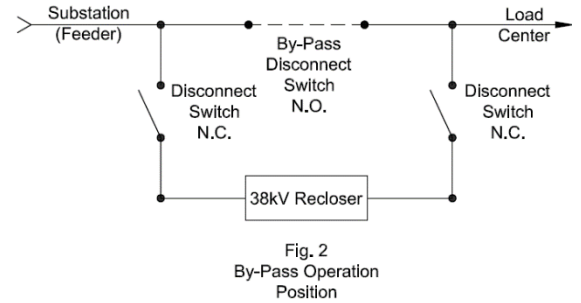
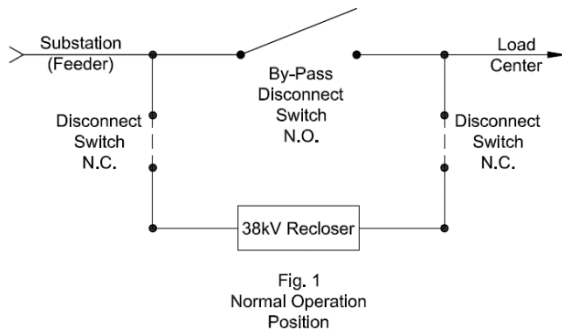
- a. Temperature & humidity: Equipment supplied shall be adequate for an operating temperature range of 0°C to 50°C (32 to 122°F), with humidity up to 100%.
- b. Wind conditions: All mounting equipment shall be designed and constructed to withstand sustained hurricane-force wind velocities complying with the applicable construction codes, standards, or LUMA Energy's design criteria for PR.
- c. Pollution: The equipment shall be designed and constructed for the corrosive environment of a distribution system in a tropical zone close to sea or exposed to strong sea winds and it shall provide reliable performance in environments with high exposure to salt, minerals, chemicals, or wind-borne particulate. The insulator contamination levels for the equipment should be adequate to prevent flashover.

#### **2.2. Basic Use**

The Bypass Disconnect Switch is a single-phase hookstick operated switch. It is for manual switching of overhead lines on electrical distribution systems up to 46kV, rated for 900 / 1200 Amps continuous operation, 40,000 amps momentary and 25,000 amps sym. 2-seconds short-time withstand to be installed on a single fiberglass cross-arm.

The basic operation of the By-Pass Disconnect Switch equipment is to safely bypass and isolate the recloser or regulator from the distribution system for repairs or maintenance routine enabling continuous services to LUMA's customer without power outages and services disruption.

In normal operation, the bypass blade is open and the two disconnect blades are closed (Fig. 1), allowing the recloser its normal operation. When isolation of the recloser is required, the by-pass blade is closed to provide a parallel current and the disconnect blades are open isolating the Recloser (Fig. 2).



### 2.3. Description

This is a Hookstick Disconnect Switches Up to 46kV 900 Amp 40kA Momentary, to be used to bypass and isolate reclosers and regulators for repair or routine maintenance without service interruption. This switch type has blades that are parallel to each other and have vertical insulators and a base parallel to the blades.

### 3. Asset Identification

LUMA Spec	Warehouse #	Description
4752.336	032-87321	38KV – By-pass Single phase switch 900 Amps
4752.336	032-87322	38KV – By-pass Single phase switch 1200 Amps

### 4. Acceptance Criteria (example)

Test required: certified by external qualified laboratories indicating the device was built and tested to the limits set in ANSI/IEEE C37.30.

The following table shall be completed by the switch manufacturer.

Compliance Table:

Line	Criteria	Description	Pass/Fail (P / F)	Comments
1	Specification	The Proponent complies with the corresponding specification document (4752.336)		
2	Industry Standards	The Proponent complies with the industry standards established in the specification document. (ANSI/ASTM, ANSI/IEEE, UL)		

Line	Criteria	Description	Pass/Fail (P / F)	Comments
3	Electrical Requirements	<ul style="list-style-type: none"> <li>• Design Voltage: 46 kV</li> <li>• Nominal Voltage: 38 kV</li> <li>• Continuous Current: 900/1200 A</li> <li>• Basic Insulation Level: 200 kV BIL</li> <li>• Momentary Current: 40,000 A</li> <li>• Min. Leakage Distance: 43"</li> <li>• 60Hz Withstand-Wet: 100kV.</li> <li>• Impulse Flashover-Positive: 280kV</li> </ul>		
4	Mechanical Requirements	<ul style="list-style-type: none"> <li>• Base Dia. 4 Holes @ 5" B.C. or 4 Holes @ 3" B.C.</li> <li>• Mech &amp; Elec Tension Strength: 15,000 lbf combined</li> </ul>		
5	Material	<ul style="list-style-type: none"> <li>• Non-Carrying Parts: Stainless Steel 304 or 316</li> <li>• Current Carrying Parts: Silver Plated</li> <li>• Insulators Type: Post Polymer</li> <li>• Switch base: Hot Dip Galvanized as per ASTM A153</li> <li>• Hardware: Hot Dip Galvanized as per ASTM A153</li> <li>• Cross Arm (3Ø model): 10' Overall Length, Fiberglass</li> </ul>		
6	Connection Terminals	<ul style="list-style-type: none"> <li>• 4 Holes Nema connector compatible with copper and aluminum conductors from 556.5 to 1192.5 KCMIL ACSR.</li> <li>• Must include carriage type bolts with nut, flat washer, and lock washer as minimum, all of them on stainless steel 304 or 316.</li> </ul>		
7	Blade Stop & Blade Lock	<ul style="list-style-type: none"> <li>• A stop shall be provided to prevent the overswing of the blade holder beyond a 180°.</li> <li>• A positive blade lock shall be provided to prevent opening under high momentary current.</li> </ul>		



Line	Criteria	Description	Pass/Fail (P / F)	Comments
8	Base Holes	<ul style="list-style-type: none"> <li>Three holes (11/16" diameter) along the base. The top one is a keyhole. The other two are 1.5" slots.</li> <li>Distance from keyhole to the second hole/slot is 12". Distance from keyhole to the bottom slot is 16".</li> </ul>		
9	Name Plate	Stainless-steel fastened and engraved to the device showing all electrical characteristics.		

## 5. Reference Documents

38kV - 40.5kV Three Phase Line Recloser System, Specification 4752.334

38kV – 46kV Three Phase Bypass Disconnect Switch System, Specification 4752.335

## 6. Inspection

The acceptance of any material or equipment shall in no way relieve the vendor from his responsibility to meet all the requirements of this specification, and it would not prevent subsequent rejection if such materials were found later to be defective.

## 7. Drawings

7.1. Vendor must submit a technical drawing in PDF and CAD file.

— End of Specification —











# 4752.336 V02 38kV 46kV Single Phase Bypass Disconnect Switch System

Final Audit Report

2025-07-28


Created:	2025-07-28
By:	Oscar Almanza (oscar.almanza@lumapr.com)
Status:	Signed
Transaction ID:	CBJCHBCAABAA1WpFBgTAJofJbaaEsUGA7SDJpy6K5MQF

## "4752.336 V02 38kV 46kV Single Phase Bypass Disconnect Switch System" History

-  Document created by Oscar Almanza (oscar.almanza@lumapr.com)  
2025-07-28 - 8:05:53 PM GMT
-  Document emailed to Oscar Almanza (oscar.almanza@lumapr.com) for signature  
2025-07-28 - 8:06:00 PM GMT
-  Email viewed by Oscar Almanza (oscar.almanza@lumapr.com)  
2025-07-28 - 8:06:26 PM GMT
-  Document e-signed by Oscar Almanza (oscar.almanza@lumapr.com)  
Signature Date: 2025-07-28 - 8:06:44 PM GMT - Time Source: server
-  Document emailed to alexander.dsantos@lumapr.com for signature  
2025-07-28 - 8:06:46 PM GMT
-  Email viewed by alexander.dsantos@lumapr.com  
2025-07-28 - 8:08:24 PM GMT
-  Signer alexander.dsantos@lumapr.com entered name at signing as Alexander D'Santos  
2025-07-28 - 8:09:14 PM GMT
-  Document e-signed by Alexander D'Santos (alexander.dsantos@lumapr.com)  
Signature Date: 2025-07-28 - 8:09:16 PM GMT - Time Source: server
-  Document emailed to Oscar Venegas (oscar.venegas@lumapr.com) for signature  
2025-07-28 - 8:09:17 PM GMT
-  Email viewed by Oscar Venegas (oscar.venegas@lumapr.com)  
2025-07-28 - 8:17:46 PM GMT

 Document e-signed by Oscar Venegas (oscar.venegas@lumapr.com)

Signature Date: 2025-07-28 - 8:18:07 PM GMT - Time Source: server

 Document emailed to Reinaldo Baretty (reinaldo.baretty@lumapr.com) for signature

2025-07-28 - 8:18:09 PM GMT

 Email viewed by Reinaldo Baretty (reinaldo.baretty@lumapr.com)

2025-07-28 - 8:21:45 PM GMT

 Document e-signed by Reinaldo Baretty (reinaldo.baretty@lumapr.com)

Signature Date: 2025-07-28 - 8:22:29 PM GMT - Time Source: server

 Agreement completed.

2025-07-28 - 8:22:29 PM GMT