



# Yoke Plate Rectangular

## Equipment Specification

Document No.: 4752.276

Item No.: 002-13991

Originating Dept: Transmission Eng

	Document Title: <b>Yoke Plate Rectangular</b>		
	Document Type: <b>Equipment Specification</b>	Document No.: <b>4752.276</b>	
Department: Transmission Engineering	Version: 01	Issue Date: 5/26/2022	Effective Date: 5/26/2022

<p><b>Author</b> Emmanuel E Rivera Cruz Designer, Transmission &amp; Substation Engineering</p> <p><b>Reviewer 1</b> Rene Maldonado Supervisor, Line Engineering Standards</p> <p><b>Reviewer 2</b> Oscar Venegas Lead Engineer, Trans</p> <p><b>Approver</b> Walter Carrasquillo Alberty Manager, T&amp;S Standards and Materials</p>	Signature and Date  Emmanuel E Rivera Cruz (Jun 2, 2022 16:33 EDT)
	Signature and Date  Rene Maldonado (Jun 3, 2022 08:25 EDT)
	Signature and Date  Oscar E Venegas (Jun 6, 2022 11:43 EDT)
	Signature and Date  Walter Carrasquillo (Jun 6, 2022 16:17 EDT)

<b>Management Approval</b>	
<p>Heriberto González Section Manager, Standards</p> <p>Darrel Wilvers Director, Asset Management</p>	Signature and Date  Heriberto Gonzalez (Jun 6, 2022 18:06 EDT)
	Signature and Date  N/A

<b>Version History</b>					
Version	Date	Revision Comments	Author	Reviewers	Approver
00	Dec 28, 2021		Rene Maldonado	Heriberto Gonzalez	Walter Carrasquillo
01	May 26, 2022	General revision for final approval	Emmanuel E. Rivera	Rene Maldonado Oscar Venegas	Walter Carrasquillo



## **1. General**

- 1.1. This is a general specification that covers the minimum requirements for a Yoke Plate Rectangular to be used in the transmission system in Puerto Rico.
- 1.2. Further information will be provided by LUMA Energy at the time of order placement and will provide information on site conditions, quantity, and other requirements.
- 1.3. This document includes the general electrical and mechanical characteristics of the material.

## **2. Specific Name**

- 2.1. Yoke Plate Rectangular.

## **3. Basic Use**

- 3.1. For attach the tangent and deadend conductor support assembly in aluminum transmission towers.

## **4. Special Requirements**

- 4.1. Samples shall be furnished if requested by LUMA.
- 4.2. LUMA may require one (1) unit properly labeled for testing and analysis.
- 4.3. Descriptive and technical literature shall be supplied if requested by LUMA.

## **5. Marking and Packaging**

- 5.1. All material and equipment shall be packaged and marked in such a way as to facilitate handling and protection from damage and that the receiving warehouse can readily identify it and send it, in one complete unit, to a field location without opening crates or boxes to sort items and/or parts.
- 5.2. Containers or boxes shall be marked with the following information:
  - 5.2.1. Vendor
  - 5.2.2. Order Number
  - 5.2.3. Catalog Number
  - 5.2.4. Code Number
  - 5.2.5. Name and Size
  - 5.2.6. Net weight and gross weight
  - 5.2.7. Manufacturer Name and lot number
  - 5.2.8. Material Name

## **6. Equal or approved equal to:**

- 6.1. HUBBELL Power System - Catalog Number YPR6019401 (See drawing A).
- 6.2. MacLean Power Systems - Catalog Number Y2DR060D1800 (See drawing B)

**7. Number per package:**

7.1. As approved by LUMA.

**8. Acceptance Criteria**

8.1. Latest applicable codes, standards, and other regulations: ANSI/ASTM.

**9. Description**

9.1. Configuration (Shape): Delta (Rectangular)

9.2. Minimum Required Ultimate Strength: 60,000 lbs.

9.3. Minimum Length: 18 inches

9.4. Minimum Width: 6 inches

9.5. Minimum Thickness: 3/4 inches

9.6. Minimum Holes Required: 4

9.7. Hole Size Diameter: 15/16 inches

9.8. Shall be hot-dip galvanized in accordance with ANSI/ASTM A153.

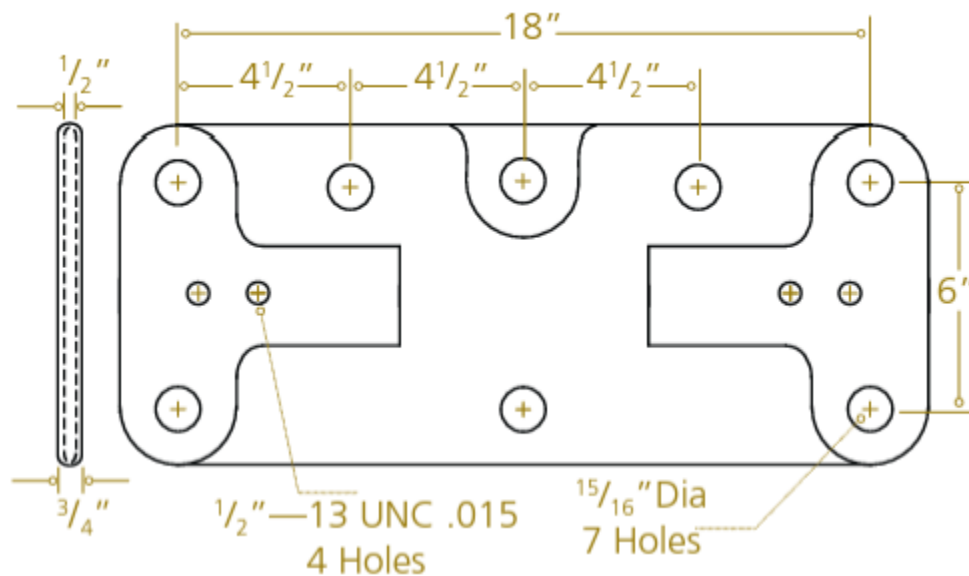
9.9. Metric conversion as per latest ASTM.

**10. Inspection**

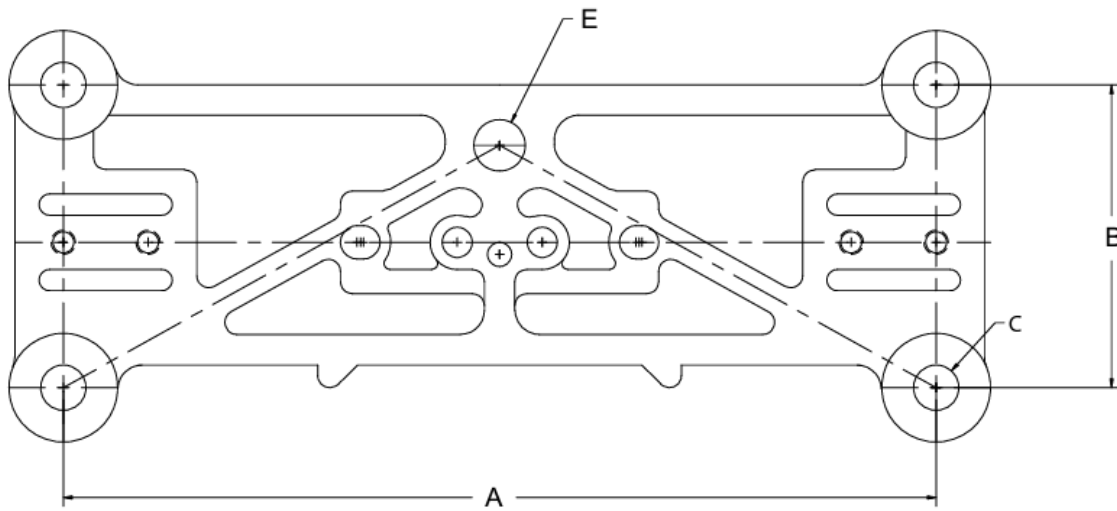
10.1. The acceptance of any material or equipment shall in no way relieve the vendor from his responsibility to meet all the requirements of this specification, and it shall not prevent subsequent rejection if such material is found to be defective later.

**11. Drawing**

11.1. DRAWING "A" – HUBBELL Power Systems Inc.



11.2. DRAWING "B" – MacLean Power Systems



A	B	C	D	E
18"	6 1/4"	15/16"	3/4"	1 1/16"

— End of Specification —