

DAILY GENERATION AVAILABILITY REPORT

LUMA is not responsible for generation and is providing this report as part of service to our customers.
The report shows the availability generation as reported daily by each generator.

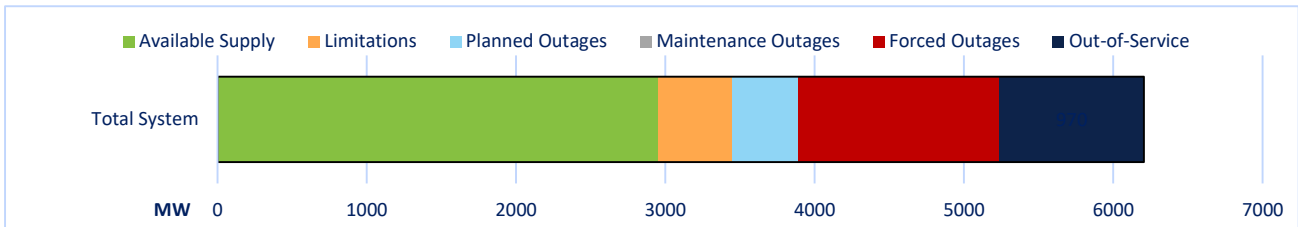
9/4/2024

Projected System Availability and Reserves

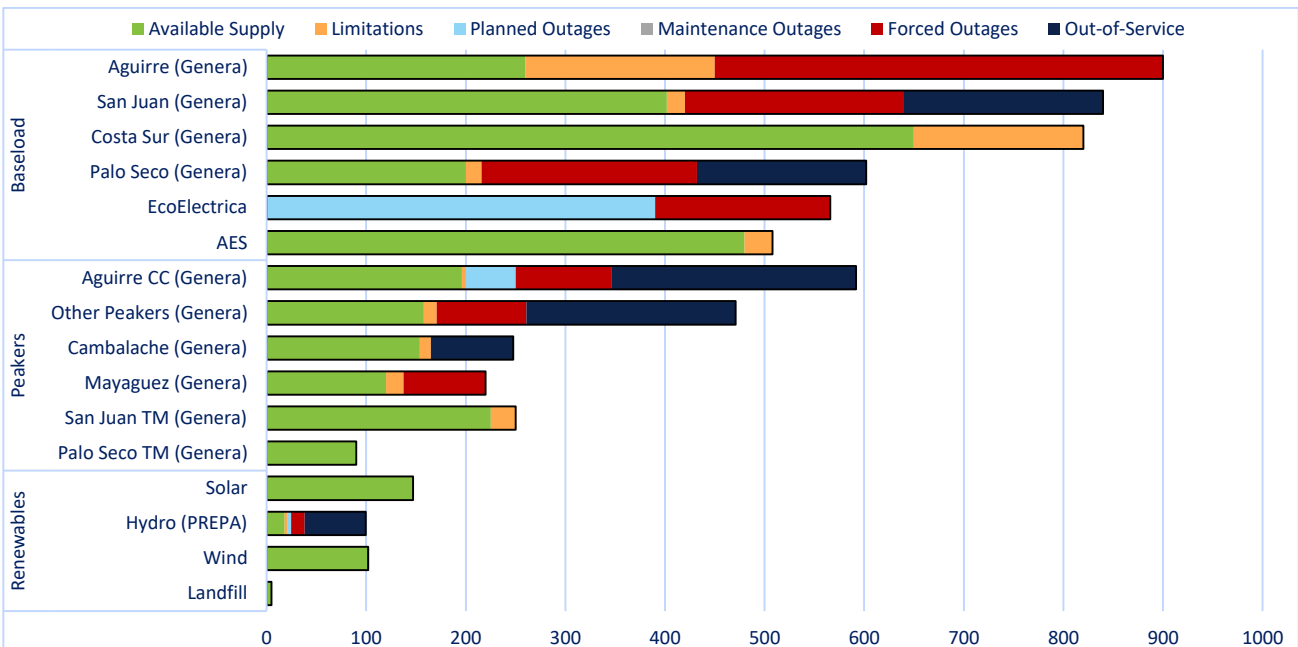
3,075 PEAK DEMAND	670 REQUIRED RESERVES	793 RESERVES SHORTFALL	Previous Day 9/3/2024	
2,952 AVAILABLE SUPPLY	-123 AVAILABLE RESERVES	48% AVAILABILITY RATE	Min. Demand 2,258 MW	Time: 3:45 AM
			Peak Demand 2,980 MW	Time: 6:58 PM
			Total Generation 56,589 MWh	

*All units are shown in MW

System Availability and Status



Availability and Status as reported by each Generator



	Renewables				Peakers						Baseload					
	Landfill	Wind	Hydro (PREPA)	Solar	Palo Seco TM (Genera)	San Juan TM (Genera)	Mayaguez (Genera)	Cambalache (Genera)	Other Peakers (Genera)	Aguirre CC (Genera)	AES	EcoElectrica	Palo Seco (Genera)	Costa Sur (Genera)	San Juan (Genera)	Aguirre (Genera)
Available Supply	5	101	18	147	89	225	120	154	158	196	480	0	200	650	402	260
Limitations	0	0	3	0	1	25	18	11	13	4	28	0	16	170	18	190
Planned Outages	0	0	4	0	0	0	0	0	0	50	0	390	0	0	0	0
Maintenance Outages	0	0	0	0	0	0	0	0	0	0	0	0	0	0	0	0
Forced Outages	0	0	14	0	0	0	83	0	90	96	0	176	216	0	220	450
Out-of-Service	0	1	61	0	0	0	83	210	210	246	0	0	170	0	200	0
Installed Capacity	5	102	100	147	90	250	220	248	471	592	508	566	602	820	840	900

MW

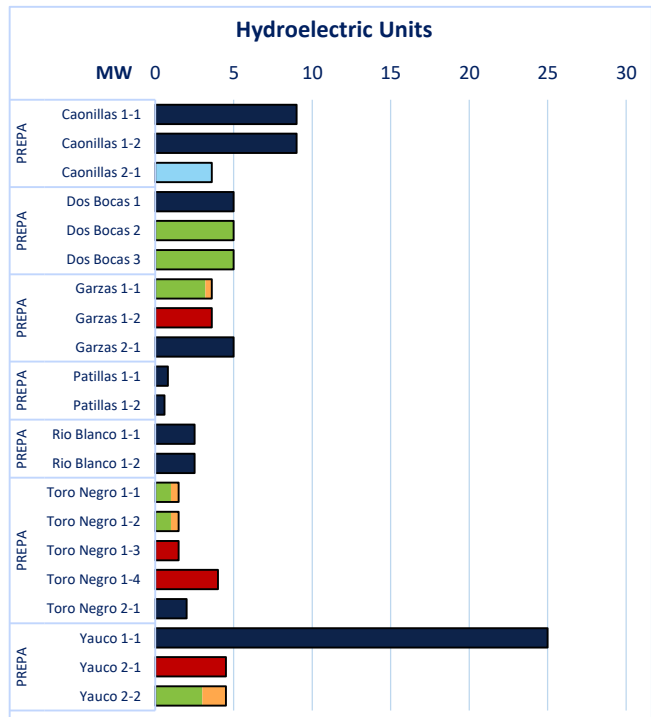
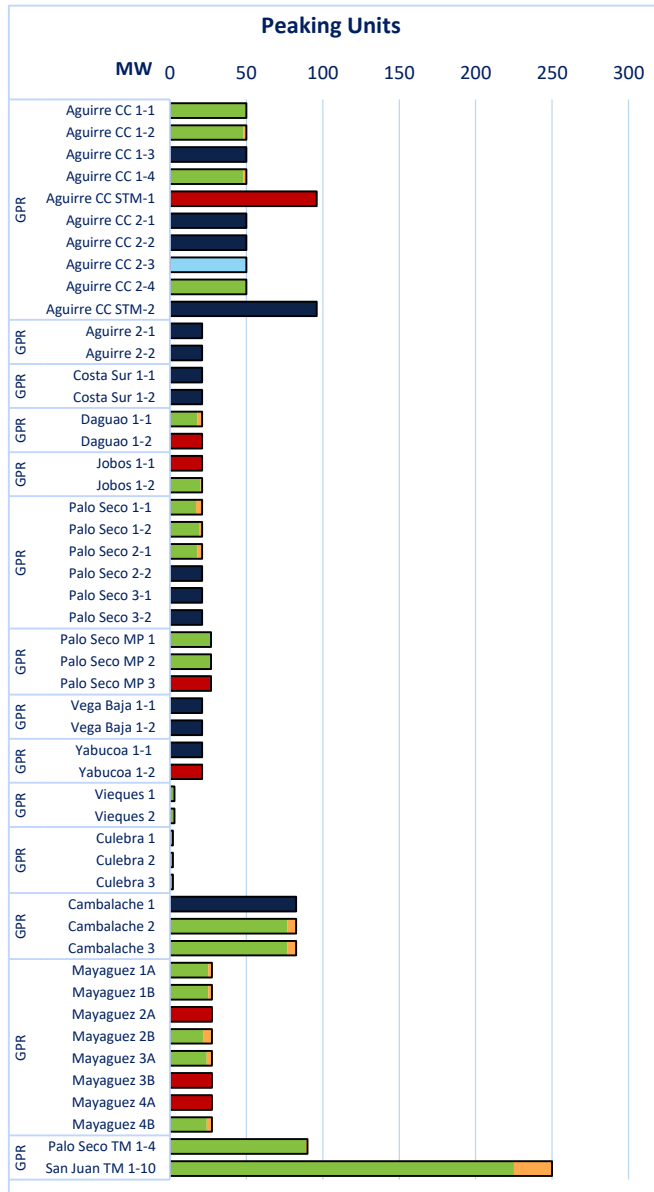
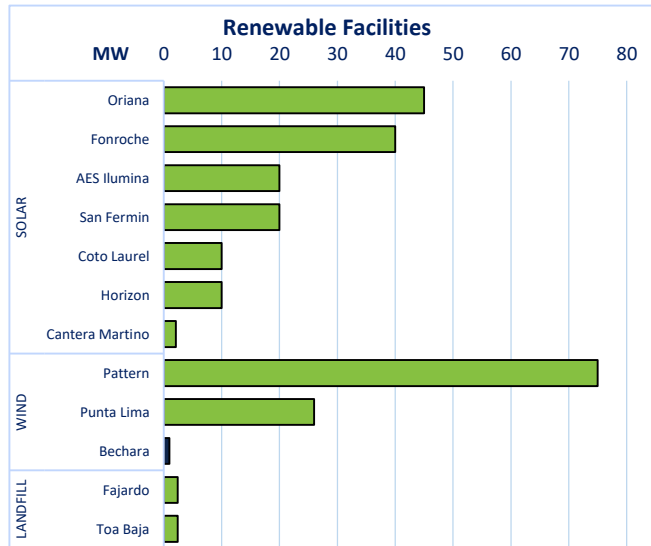
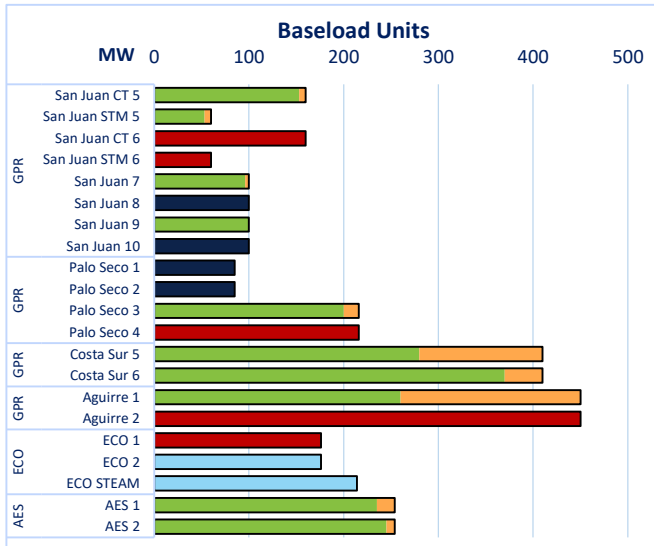
DAILY GENERATION AVAILABILITY REPORT

LUMA is not responsible for generation and is providing this report as part of service to our customers.

The report shows the availability generation as reported daily by each generator.

AVAILABILITY AND STATUS BY UNIT AS REPORTED BY EACH FACILITY

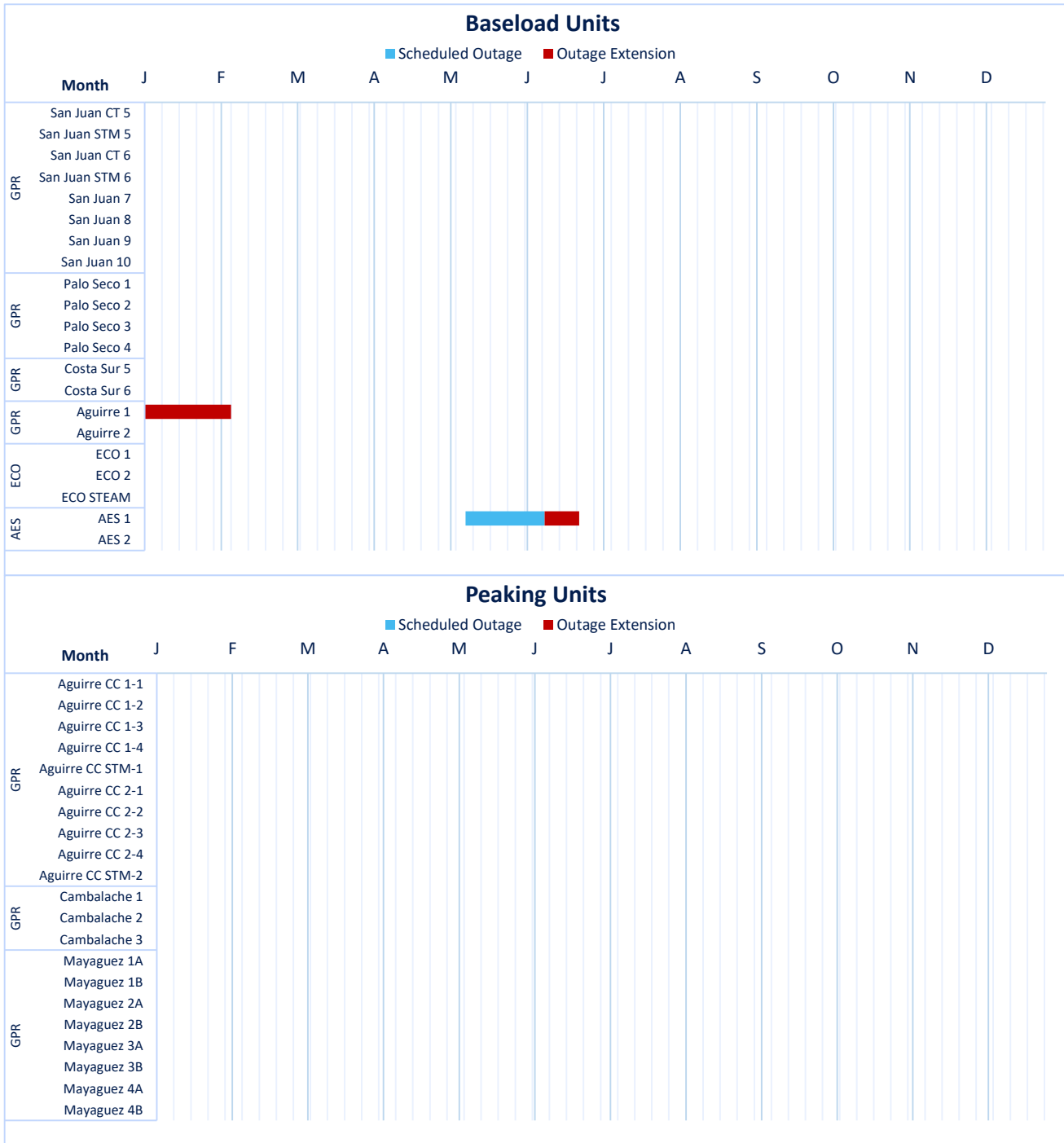
■ Available Supply
 ■ Limitations
 ■ Forced Outages
 ■ Maintenance Outages
 ■ Planned Outages
 ■ Out-of-Service



DAILY GENERATION AVAILABILITY REPORT

LUMA is not responsible for generation and is providing this report as part of service to our customers.
The report shows the availability generation as reported daily by each generator.

PLANNED AND MAINTENANCE OUTAGES



REFERENCED TERMS:

Peak Demand is the anticipated highest demand at a certain point of the day.

The Required Reserves are determined daily depending on the largest unit in the system.

Available Reserves represent the difference between the total electricity available from the generators and the current electricity demand from customers. Reserve levels can change throughout the day as the available electricity from the generators increases or decreases, or depending on the amount of electricity customers are using. Green indicates the Required Reserves will be met; red indicates the reserves will be below the Required Reserve level.

Reserves Shortfall are the difference between the Required Reserves and the Current Reserves.

Available Supply means the available electricity that will be generated by the generators. The Available Supply shown in the System Availability Graphs do not include Solar, Wind, or Landfill.

Availability Rate is calculated as Available Capacity / Nameplate Capacity, where Nameplate Capacity is the maximum output of a generator as designed by the manufacturer.

Limitations represent the reduction of electricity that can be generated by the generators. These Limitations are established by each generator.

Outages represent the reduction of electricity that can be generated by the generators due to the unavailability of a unit, or various units. These outages can be scheduled or unscheduled.

Out-of-Service represents units that have been unavailable for a period of 12 months or longer.